

Baltimore Rag - A part

By Larry Downey, Binghamton, NY

c. 1940

Play AA, BB, CC, A

Simpler Version

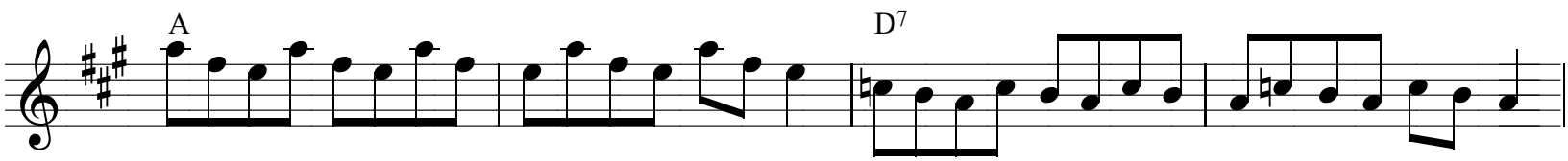
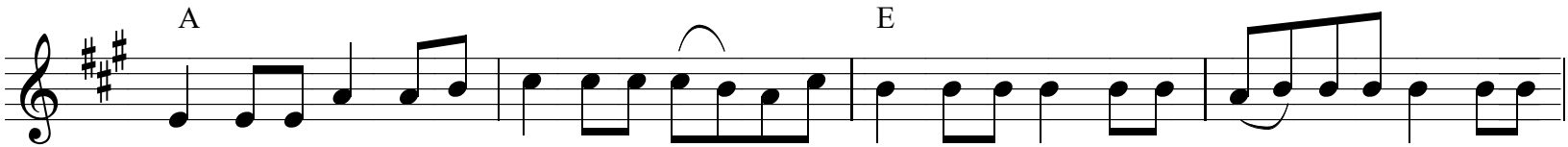
A Part

Musical notation for the A part of Baltimore Rag, simpler version. The piece is in 4/4 time with a key signature of three sharps (F#, C#, G#). The notation consists of four staves. The first staff begins with a repeat sign and a double bar line. Chord labels A and D are placed above the first and third measures respectively. The second staff has chord labels A and E above the first and third measures. The third staff has chord labels A and D above the first and third measures. The fourth staff has chord labels A, E, A, and A above the four measures. The piece ends with a double bar line and repeat dots.

Baltimore Rag - B part

Musical notation for the B part of Baltimore Rag. The piece is in 4/4 time with a key signature of three sharps (F#, C#, G#). The notation consists of four staves. The first staff begins with a repeat sign and a double bar line. Chord labels A and D7 are placed above the first and third measures respectively. The second staff has chord labels A and E above the first and third measures. The third staff has chord labels A and E above the first and third measures. The fourth staff has chord labels A, E, A, and A above the four measures. The piece ends with a double bar line and repeat dots.

Baltimore Rag - C part



ENDING: Last two measures for very
last time through A part

